

(8 PIEZAS)



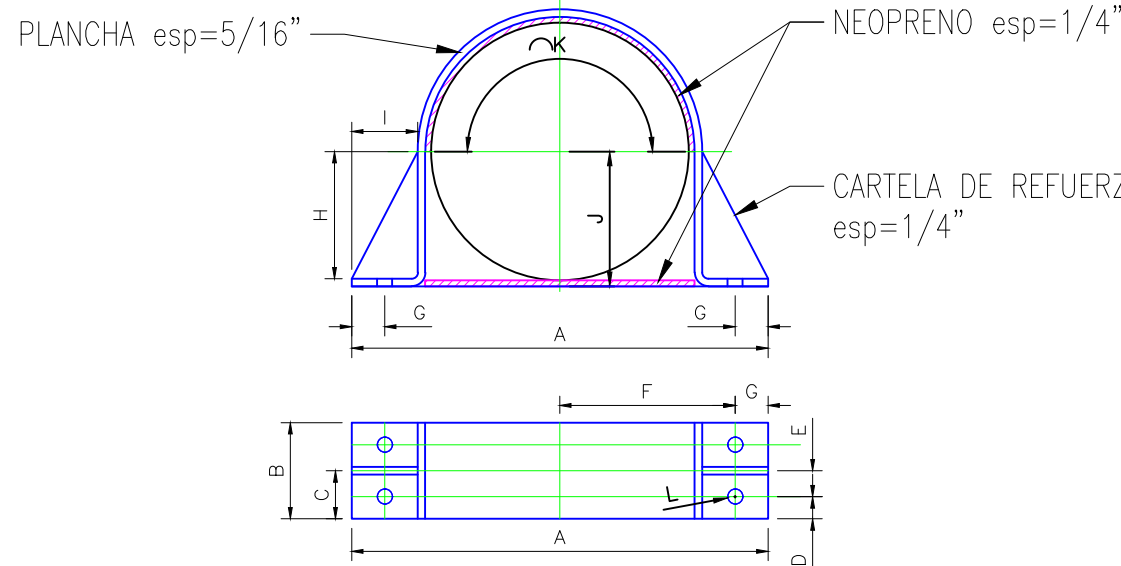
(3 PIEZAS)



(3 PIEZAS)



(SIN ESCALA)



CÓMPUTO DE MATERIALES PS-06 (8 PZAS)						
N°	DESCRIPCIÓN	UNIDAD	CANTIDAD UNITARIA	PIEZAS	TOTAL	Kg
1	PERFIL I, W 203x22.5 (HORIZONTAL)	m	0.40	8	3.20	72
2	PLANCHA 300x300 mm, e=3/8" (54.7 kg/m2)	m2	0.09	8	0.72	39.38
3	PLANCHA 615x102 mm, e=5/16" (51.7 kg/m2)	m2	0.063	8	0.54	26.06
4	PERNOS DE ANCLAJE Ø 1/2"	PZA	4	8	32	—
5	NEOPRENO e= 1/4"	m2	0.056	8	0.49	—
6	PERNOS P/ABRAZADERA Ø1/2", L=80mm	PZA	4	8	32	—
7	CARTELAS DE REFUERZO ABRAZADERA, e=1/4"	PZA	2	8	16	—

CÓMPUTO DE MATERIALES PS-08 (3 PZAS)						
N°	DESCRIPCIÓN	UNIDAD	CANTIDAD UNITARIA	PIEZAS	TOTAL	Kg
1	PERFIL I, W 203x22.5 (HORIZONTAL)	m	0.60	3	1.80	40.5
2	PLANCHA 350x350 mm, e=3/8" (54.7 kg/m2)	m2	0.12	3	0.36	19.69
3	PLANCHA 740x102 mm, e=5/16" (51.7 kg/m2)	m2	0.075	3	0.23	11.63
4	PERNOS DE ANCLAJE $\phi$ 1/2"	PZA	4	3	12	—
5	NEOPRENO e= 1/4"	m2	0.072	3	0.22	—
6	PERNOS P/ABRAZADERA $\phi$ 1/2", L=80mm	PZA	4	3	12	—
7	CARTELAS DE REFUERZO ABRAZADERA, e=1/4"	PZA	2	3	6	—

CÓMPUTO DE MATERIALES PS-10 (3 PZAS)						
N°	DESCRIPCIÓN	UNIDAD	CANTIDAD UNITARIA	PIEZAS	TOTAL	Kg
1	PERFIL I, W 203x22.5 (HORIZONTAL)	m	0.60	3	1.80	40.5
2	PLANCHA 350x350 mm, e=3/8" (54.7 kg/m2)	m2	0.12	3	0.36	19.69
3	PLANCHA 879x102 mm, e=5/16" (51.7 kg/m2)	m2	0.090	3	0.27	13.96
4	PERNOS DE ANCLAJE Ø 1/2"	PZA	4	3	12	—
5	NEOPRENO e= 1/4"	m2	0.089	3	0.27	—
6	PERNOS P/ABRAZADERA Ø1/2", L=80mm	PZA	4	3	12	—
7	CARTELAS DE REFUERZO ABRAZADERA, e=1/4"	PZA	2	3	6	—

SOPORTE	COORDENADAS WGS-84		B.O.C.	T.O.S.	T.O.C.	T.O.G.	B.O.P.	H1	H2	H3	TIPO DE PERFIL
	ESTE	NORTE									
PS-06(01)	266083.422	788885.328	2947.348	2948.248	2948.423	2948.448	2948.870	0.416	0.200	0.622	W_203X22.50
PS-06(02)	266094.553	788883.985	2947.348	2948.248	2948.423	2948.448	2948.870	0.416	0.200	0.622	W_203X22.50
PS-06(03)	266081.062	788883.789	2947.348	2948.248	2948.423	2948.448	2948.870	0.416	0.200	0.622	W_203X22.50
PS-06(04)	266082.231	788882.288	2947.348	2948.248	2948.423	2948.448	2948.870	0.416	0.200	0.622	W_203X22.50
PS-06(05)	266087.000	788880.293	2947.348	2948.248	2948.423	2948.448	2948.851	0.397	0.181	0.603	W_203X22.50
PS-06(06)	266087.585	788880.895	2947.348	2948.248	2948.423	2948.448	2948.851	0.397	0.181	0.603	W_203X22.50
PS-06(07)	266091.323	788879.889	2947.348	2948.248	2948.423	2948.448	2948.851	0.397	0.181	0.603	W_203X22.50
PS-06(08)	266092.230	788880.584	2947.348	2948.248	2948.423	2948.448	2948.851	0.397	0.181	0.603	W_203X22.50
PS-08(01)	266090.950	788880.355	2947.348	2948.248	2948.423	2948.448	2948.844	0.390	0.174	0.596	W_203X22.50
PS-08(02)	266121.768	788879.254	2947.660	2948.560	2948.735	2948.760	2949.799	1.033	0.817	1.239	W_203X22.50
PS-08(03)	266123.192	788877.914	2947.660	2948.560	2948.735	2948.760	2949.799	1.033	0.817	1.239	W_203X22.50
PS-08A(01)	266123.563	788877.670	2947.660	2948.560	2948.822	2948.847	2948.857	—	—	0.297	W_203X22.50
PS-08A(02)	266122.304	788875.142	2947.660	2948.560	2948.822	2948.847	2948.857	—	—	0.297	W_203X22.50
PS-08A(03)	266121.966	788874.019	2947.660	2948.560	2948.822	2948.847	2948.857	—	—	0.297	W_203X22.50
PS-08A(04)	266122.421	788877.935	2947.660	2948.560	2948.822	2948.847	2948.857	—	—	0.297	W_203X22.50
PS-08A(05)	266120.622	788877.612	2947.660	2948.560	2948.822	2948.847	2948.857	—	—	0.297	W_203X22.50
PS-08A(06)	266119.379	788868.292	2947.660	2948.560	2948.822	2948.847	2948.857	—	—	0.297	W_203X22.50
PS-10(01)	266088.334	788880.964	2947.348	2948.248	2948.423	2948.448	2948.817	0.363	0.147	0.569	W_203X22.50
PS-10(02)	266090.053	788880.303	2947.348	2948.248	2948.423	2948.448	2948.817	0.363	0.147	0.569	W_203X22.50
PS-10(03)	266091.616	788880.770	2947.348	2948.248	2948.423	2948.448	2948.817	0.363	0.147	0.569	W_203X22.51

TUBERIA	A	B	C	D	E	F	G	H	I	J	K	L
Ø pulg	mm	mm	mm	mm	mm	mm	mm	mm	mm	mm	mm	pulg
2"	189	40	20	20	—	70	25	—	—	37	115	3/8
4"	243	48.8	24.4	24.4	—	97	25	—	—	64	200	1/2
6"	337	102	51	24	28	134	35	83	70	91	284	5/8
8"	388	102	51	24	28	159	35	108	70	116	364	5/8
10"	442	102	51	24	28	186	35	135	70	143	449	5/8

[illegible]